

Pedrera Coffee Table - Structured Glass

Designed Corsini & Ruiz Millet - 1955



ITEM NUMBER	Pedrera Coffee Table (Base: Chrome, Top: Transparent, Structured Glass)	10148699
	Pedrera Coffee Table (Base: Chrome, Top: Smoke, Structured Glass)	10148700
	Pedrera Coffee Table (Base: Chrome, Top: Bronze, Structured Glass)	10148701
	Pedrera Coffee Table (Base: Black Semi Matt, Top: Transparent, Structured Glass)	10148702
	Pedrera Coffee Table (Base: Black Semi Matt, Top: Smoke, Structured Glass)	10148703
	Pedrera Coffee Table (Base: Black Semi Matt, Top: Bronze, Structured Glass)	10148704
	Pedrera Coffee Table (Base: Brass Semi Matt, Top: Transparent, Structured Glass)	10148705
	Pedrera Coffee Table (Base: Brass Semi Matt, Top: Smoke, Structured Glass)	10148706
	Pedrera Coffee Table (Base: Brass Semi Matt, Top: Bronze, Structured Glass)	10148707

DESCRIPTION	<p>Designed by Barba Corsini in 1955, the Gaudí-inspired Pedrera Coffee Table features a sculptural steel base and organically rounded glass top, echoing the undulating forms of Casa Milà. The design is reimagined with structured glass tops in three luminous finishes: Transparent, Smoke, and Bronze with frames in black, chrome, or brass. Crafted in Italy using traditional glass-fusing technique, each tabletop features a rippled underside that plays with light and reflection. Made from tinted glass with a dyed-through finish, this process preserves the glass's natural luminosity and transparency while preventing surface wear. Tempered for strength and durability, the structured glass tops bring texture, color, and sensory depth to Corsini's celebrated design, enriching its architectural character while maintaining its timeless elegance. Re-edited by Galeria H20 in 1991 under the supervision of Joaquim Ruiz Millet, the Pedrera Coffee Table continues to unite architecture, craft, and modern design in enduring form.</p>
-------------	---

Materials & Finishes

TABLE BASE

Brass Semi Matt, Black Semi Matt, Chrome

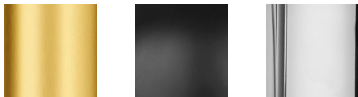
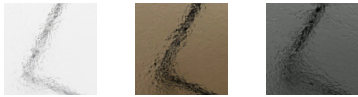


TABLE TOP

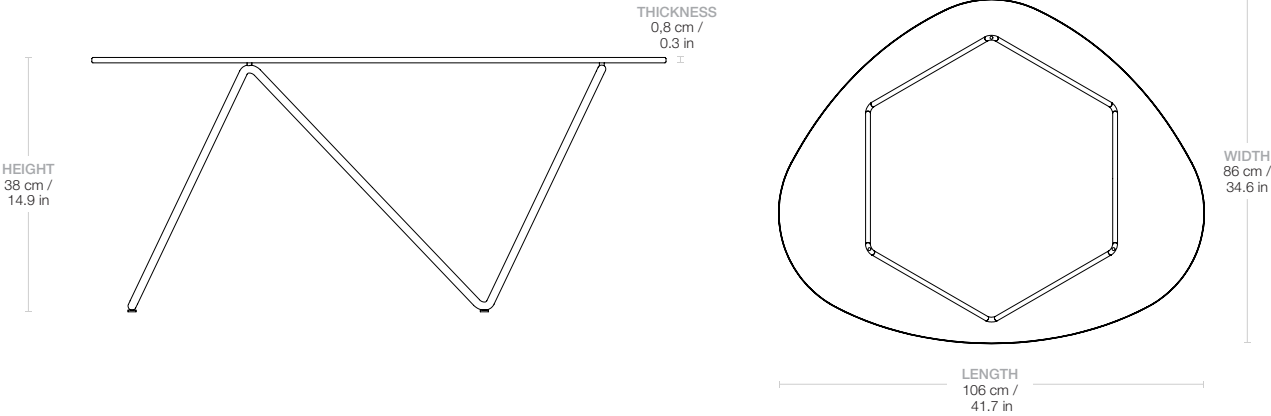
Structured glass in Transparent, Bronze, Smoke



MATERIALS

Steel, Glass

Dimensions



LENGTH	106 cm / 41.7 in
WIDTH	86 cm / 34.6 in
HEIGHT	38 cm / 14.9 in
TABLETOP THICKNESS	0.8 cm / 0.3 in

Weight

TOTAL WEIGHT	16,2 kg / 35.7 lbs
BASE WEIGHT	2.6 kg / 5.7 lbs
TABLETOP WEIGHT	13.6 kg / 29.9 lbs

Packaging

NUMBER OF PARCELS	1
PACKAGING LENGTH	119 cm / 46.8 in

PACKAGING WIDTH	98 cm / 38.6 in
PACKAGING HEIGHT	47 cm / 18.5 in
PACKAGING WEIGHT	6.3 kg / 13.9 lbs
GROSS WEIGHT	22,5 kg / 59.6 lbs